

**Precision and flexibility**

- Proportional control of movements
- Hydrostatic transmission and inching pedal

Compact and versatile

- 5 m length
- Short turning radius
- Hight safety cab

Comfort and ergonomoy

- Driving position reduces fatigue at work
- LMI easy to read with cut off dangerous movements
- Tilt corrector as standard
- Smart control 4 in 1 joystick



Placing height : 10 m

Maximum lift capacity :
3500 kg**Haulotte** 
GROUP

More than lifting



HTL 3510



TELEHANDLER

Haulotte

GROUP

Placing height : 10 m

Maximum lift capacity : 3500 kg



PERFORMANCES

| | |
|------------------------------|---------|
| Maximum lift capacity | 3500 kg |
| Lift capacity to full height | 2000 kg |
| Lift capacity at full reach | 500 kg |
| Maximum fork height | 10 m |
| Reach at maximum fork height | 2.2 m |
| Maximum forward reach | 7.2 m |



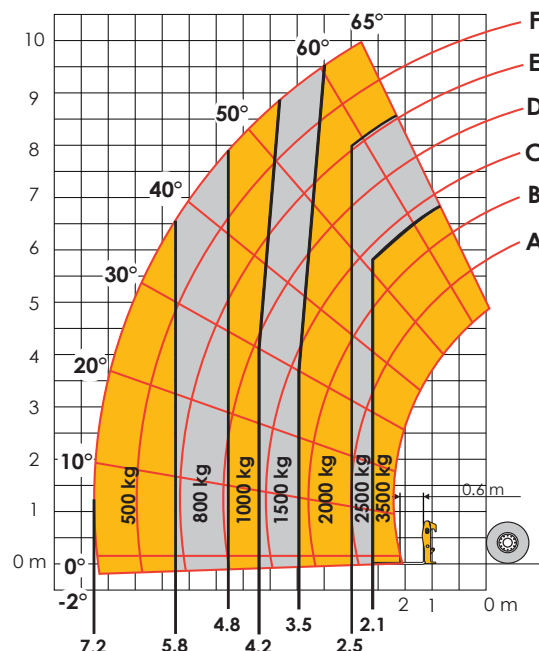
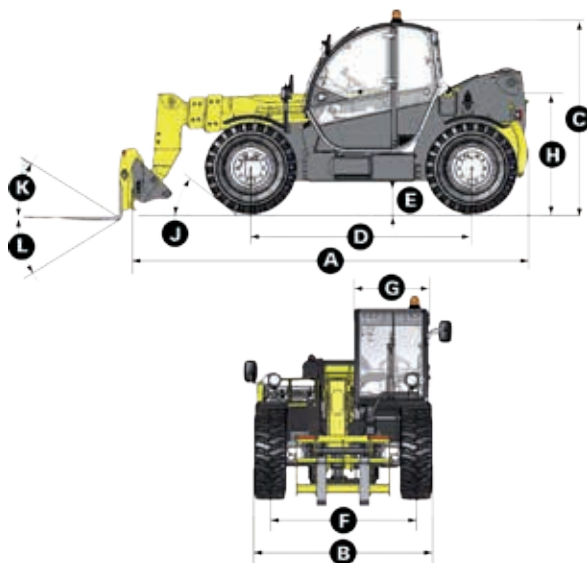
DIMENSIONS

| | |
|------------------------------------|-------------|
| A Length | 4.96 m |
| B Width | 2.26 m |
| C Height | 2.42 m |
| D Wheelbase | 2.78 m |
| E Ground clearance | 42 cm |
| F Track width | 1.88 m |
| G Cab width | 0.96 m |
| H Height to high boom pivot | 1.6 m |
| J Approach angle | 30 ° |
| K Upper rotation of forks | 18 ° |
| L Lower rotation of forks | 104 ° |
| Turning radius (outside wheels) | 3.7 m |
| Weight with forks | 8570 kg |
| Tyres type | 405/70 - 24 |



ENGINE

| | |
|---------------------|-------------|
| Engine model | PERKINS |
| Engine Capacity | 4400 cm3 |
| Engine power output | 70 kW |
| Engine torque | 392 Nm |
| Transmission type | Hydrostatic |
| Fuel tank | 120 l |
| Engine oil | 103 l |



STANDARD EQUIPMENT

- Heavy duty Hydrostatic transmission
- 4 wheel drive and steer
- Fuel filter with water separator
- Gear equipment pump
- Proportional controls for movement of boom/telescopic arm/excavation and accessories
- Safety valves on hydraulic jacks
- Auxilliary hydraulic ports
- Overload/dangerous movements cut out switch
- Tilt corrector: +/- 10 °
- ROPS/FOPS cabin with heating and ventilation
- Backlighted e-tronic dashboard

OPTIONS AND ACCESSORIES

- Buckets
- Jibs
- Winches
- Cold Weather Package
- Biodegradable oil
- Cold environment oil
- Hot environment oil
- Air conditioning
- Working lights
- Electrically hydraulic controls

05640 - Non contractual document - We reserve the right to modify the technical characteristics of this document without notice - 04/2013

UNITED
Forklift and
Access Solutions

131 607

www.unitedequipment.com.au

SALES | RENTALS | SERVICE | PARTS | FINANCE | TRAINING
Perth | Bunbury | Melbourne | Ballarat | Sydney | Brisbane | Darwin